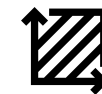


Industrial park expansion opportunity

- The property is conveniently located off Hwy 441 near the Deerhaven Renewal Energy Center with easy access to the Biotech/Life Sciences cluster in Alachua, I-75 and downtown Gainesville.
- The 17.11 acres of vacant land is zoned for industrial development (IG-Industrial General).
- The land includes 2.89 acres of roads, NW 123rd Place and NW 124th Place, within McGinley Industrial Park.
- The property is surrounded by businesses that provide metal works, paving, crane services, engine repair and metal roofing. Businesses include, Mid-Fla Heating & Air, Ray's Metal Works Inc., US Spars, Andrews Paving, Hickman Metal Roofing, and Innovative Machine Inc.



Lot size:
±20 acres



Price:
\$718,721



Zoning: Industrial
General (IG)

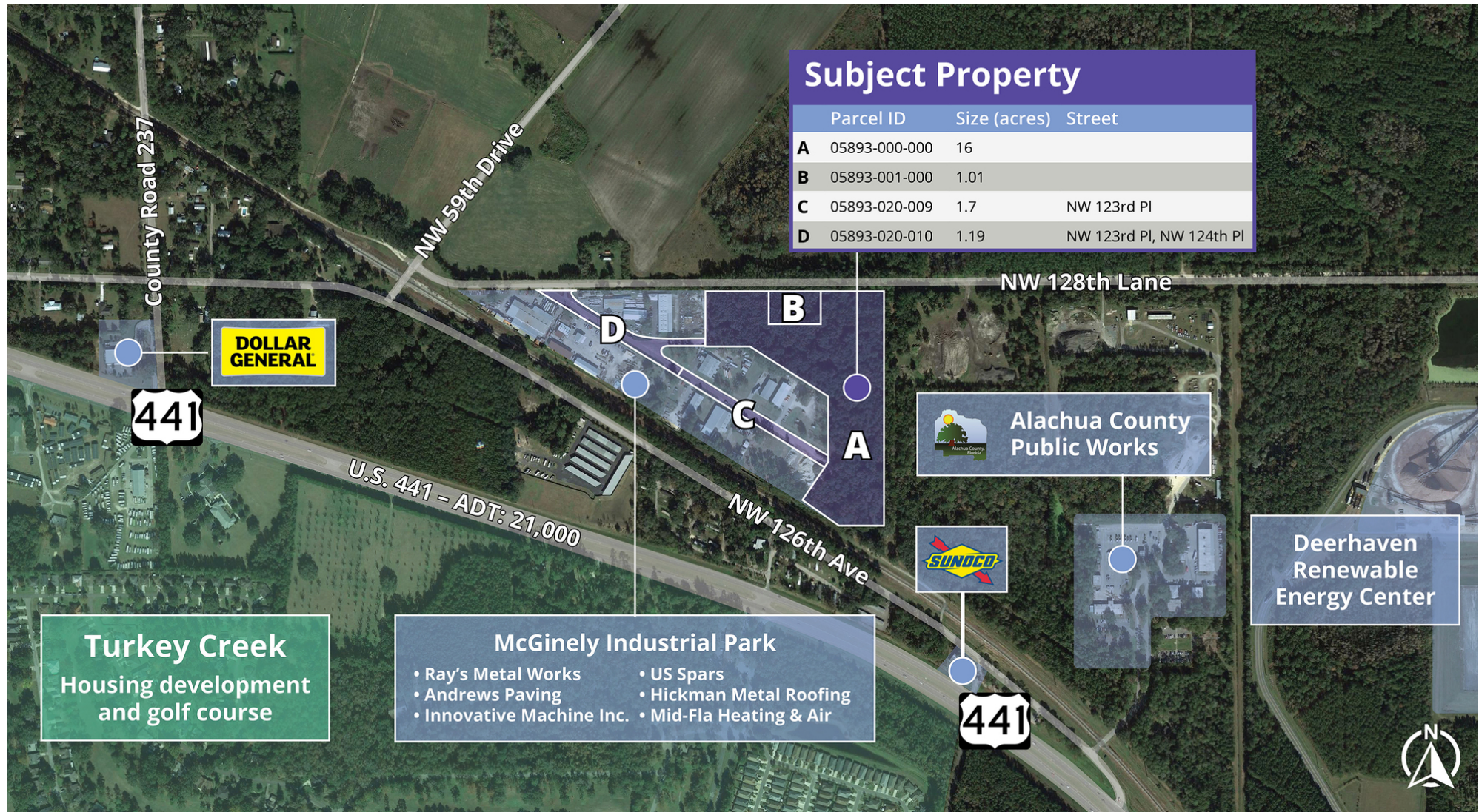
**Get more
information**

Susan Fisher

Associate
D 352 559 8795
susan.fisher@avisonyoung.com

Rick Cain, CCIM, SIOR

Principal
D 352 505 7588
rick.cain@avisonyoung.com



**AVISON
YOUNG**

Susan Fisher

Associate

D 352 559 8795

susan.fisher@avisonyoung.com

Rick Cain, CCIM, SIOR

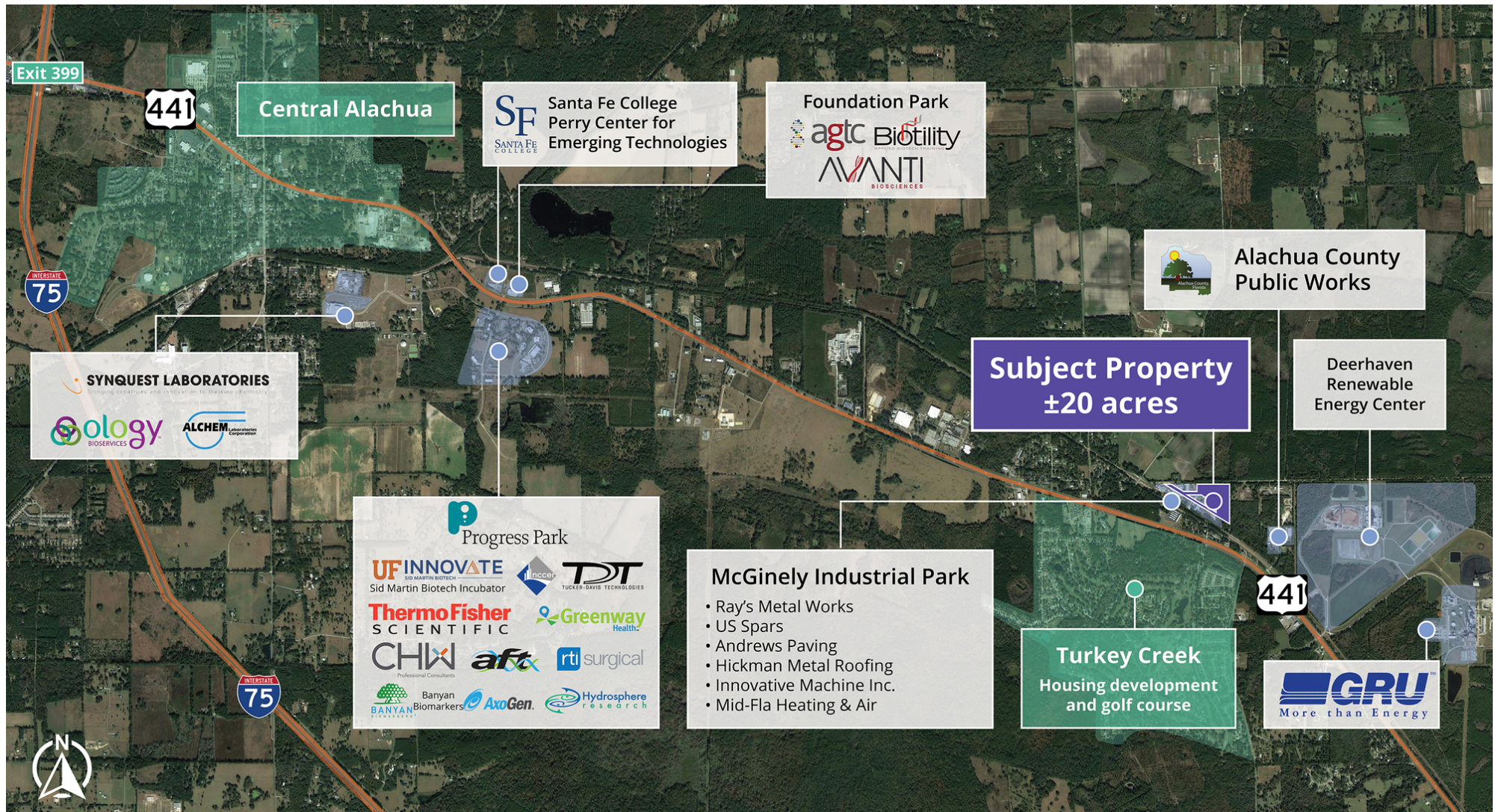
Principal

D 352 505 7588

rick.cain@avisonyoung.com

Surrounding area

NW 128th Lane, Gainesville, FL 32653



**AVISON
YOUNG**

Susan Fisher

Associate

D 352 559 8795

susan.fisher@avisonyoung.com

Rick Cain, CCIM, SIOR

Principal

D 352 505 7588

rick.cain@avisonyoung.com

Avison Young - Gainesville | 132 NW 76th Drive | Gainesville, FL 32607 | 352 505 3884

© 2021. Avison Young. Information contained herein was obtained from sources deemed reliable and, while thought to be correct, have not been verified. Avison Young does not guarantee the accuracy or completeness of the information presented, nor assumes any responsibility or liability for any errors or omissions therein.