

CLERMONT RESIDENTIAL LOTS

LAKE NELLIE ROAD
CLERMONT, FL 34711

Trish Leisner, CCIM
O: 352.267.6216 | C: 352.267.6216
trish.leisner@svn.com



Property Overview



Sale Price

\$250,000/LOT

OFFERING SUMMARY

Lot Acreage:	5 Acres - mol
City:	Clermont
County:	Lake
Property Type:	Land:
Zoning:	Ag
PIN's:	1026008, 1098777, 1082625, 1110858, 1025974

PROPERTY OVERVIEW

FIVE - 5 Acre Lots each listed at \$250,000. This land currently is an existing orange grove and only lot 3 contains a well. [The well more than likely works but is not guaranteed]. The eastern most lot [lot 5] is adjacent to Lake Louisa State Park, offering excellent access to the back entrance of the Park. There are two prominent lakes nearby - Lake Louisa Lake and the beautiful Lake Nellie. These lots are also directly located along Lake Nellie Rd, which is county paved road. The lots are offered separately or combined. One major feature of these lots are no deed restrictions or HOA fees.

The property is situated outside of the City of Clermont which will require a water well and septic. Lots 3, 4, and 5 have been approved for an exception of density, lots 1 and 2 are in the application process. The land is owned by a Foundation, therefore the lots are exclusively offered in "As-Is" condition.

These lots are quite an opportunity to create a beautiful homesite with privacy. Plenty of room to play to keep your livestock, dogs, and horses.

Specifications & Features



SPECIFICATIONS & FEATURES

Uplands / Wetlands:	Some wetlands on Lot 5
Taxes & Tax Year:	\$93 Year 2022
Zoning / FLU:	AG/Green Swamp Rural Conservation with Lot of Records for 5 Acre Tracts
Water Source & Utilities:	1 Well & Power on Lot 3
Road Frontage:	Lake Nellie Rd 1,660 FT
Nearest Point of Interest:	Lake Louisa State Park Downtown Clermont 15 Minutes
Current Use:	Orange Grove
Potential Recreational / Alt Uses:	Horses and animals/livestock
Survey or Site Testing Reports:	No Survey, Well Test for the well located on Lot #3, EDB on 2/3 of Lot #1

Land Lots

OF LOTS 5 | TOTAL LOT SIZE 4.76 - 4.91 ACRES | TOTAL LOT PRICE \$250,000 - \$275,000 | BEST USE

STATUS	LOT #	APN	SUB-TYPE	SIZE	PRICE
Available	1	1026008	Residential	4.82 Acres	\$250,000
Available	2	1098777	Residential	4.81 Acres	\$250,000
Available	3	1082625	Residential	4.78 Acres	\$275,000
Available	4	1110858	Residential	4.76 Acres	\$250,000
Available	5	1025974	Residential	4.91 Acres	\$250,000



Location Description



LOCATION DESCRIPTION

The five [5] residential lots are located in Clermont, a city within Lake County.

One major amenity to the subject lots is the proximity to Lake Louisa State Park. The park is a 4,372-acre Florida State Park and the back entrance to the park is just feet away from the subject lots. Visitors of the park can choose from an array of activities such as camping, glamping, boating, and cabin rentals.



Location



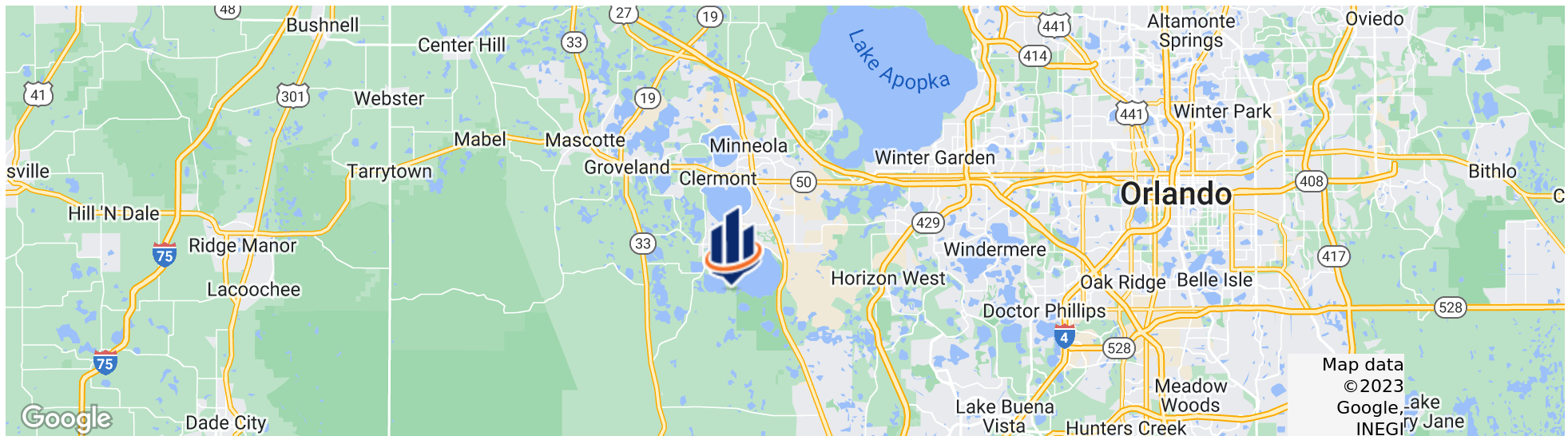
LOCATION & DRIVING DIRECTIONS

Parcel: 1026008 1098777 1082625
1110858 1025974

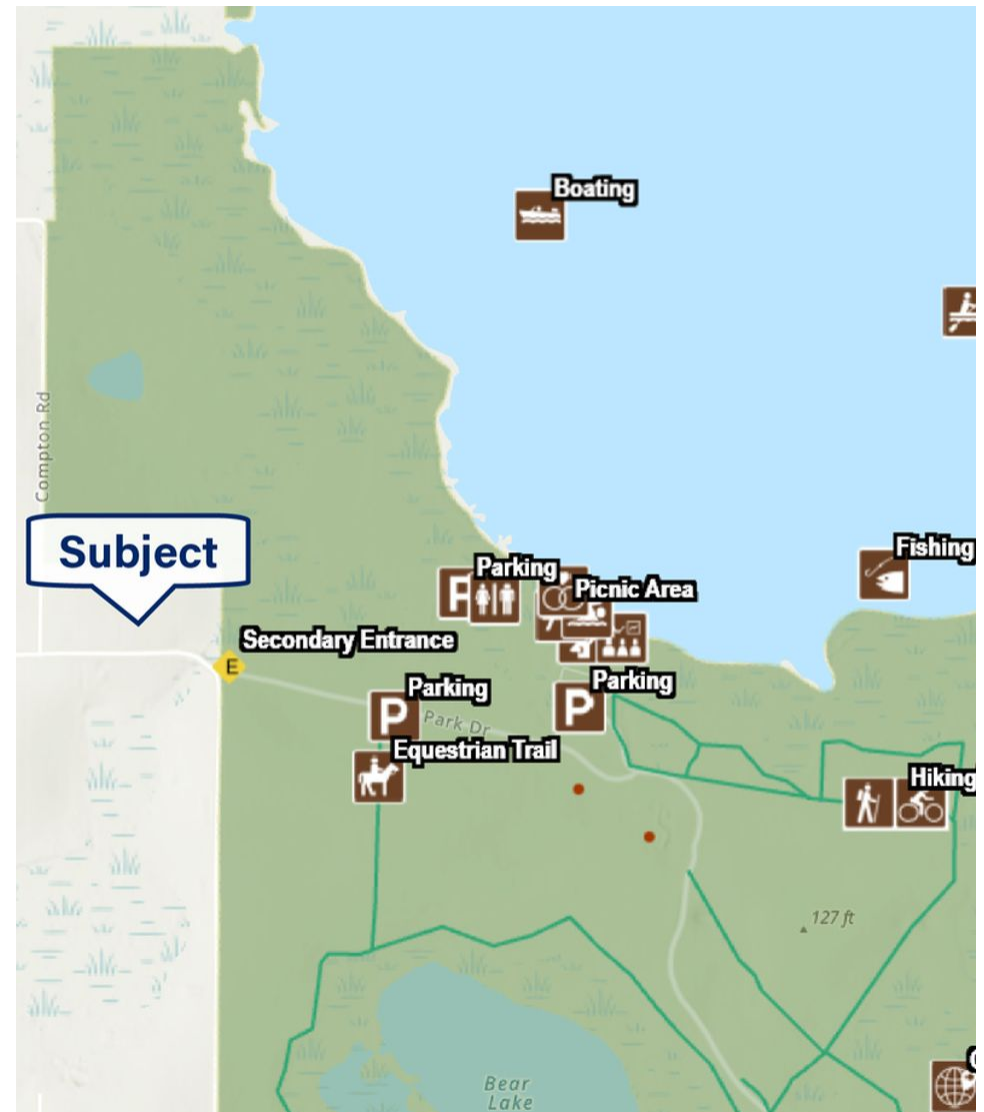
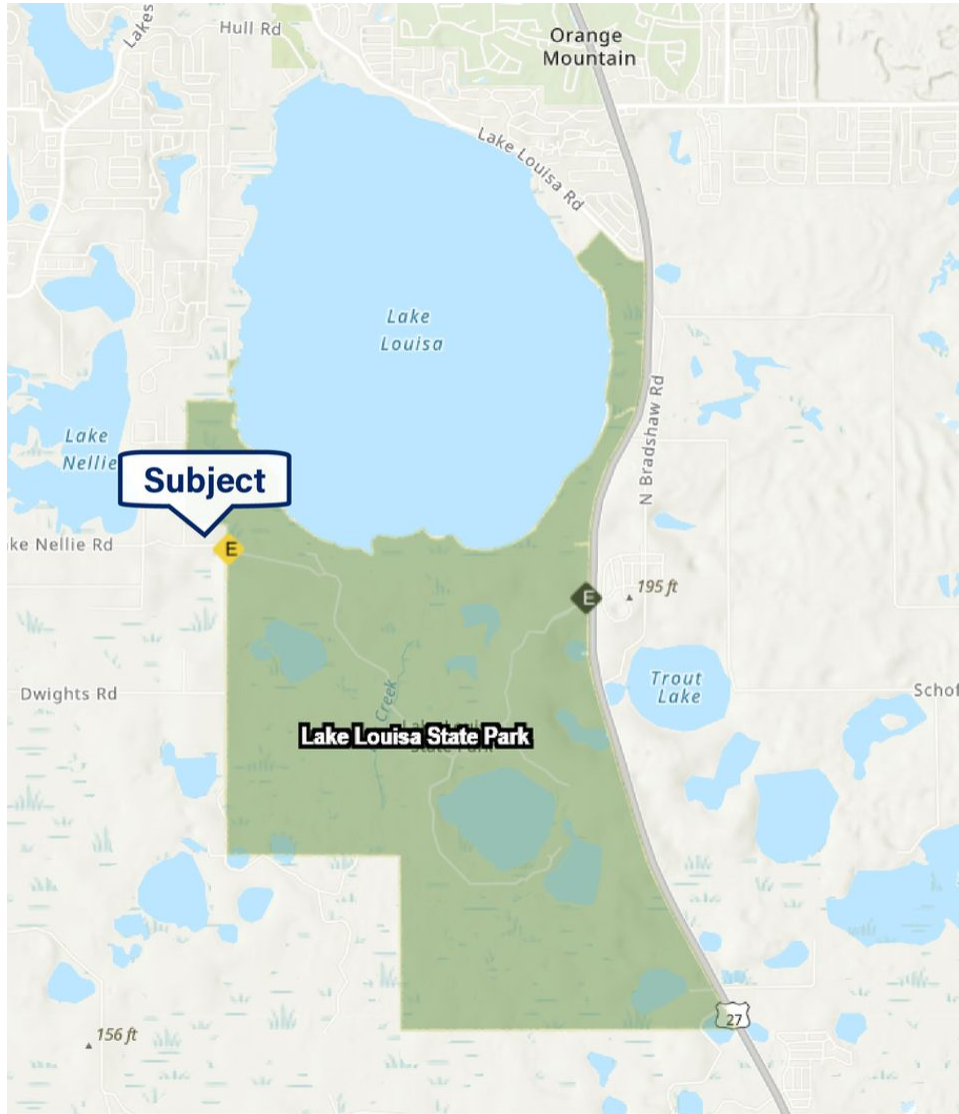
GPS: 28.462428, -81.759387

Driving Directions: Highway 50 to CR 561
South; East on Lake Nellie
Road; lots are on the
north side of the road at
the end of the pavement

Showing Instructions: Call for information on
each lot, go direct.



Lake Louisa State Park Proximity Map



Retailer Map





LAKE COUNTY
FLORIDA

Founded	1887	Density	385.2 [2019]
County Seat	Tavares	Population	367,118 [2019]
Area	953 sq mi	Website	lakecountyfl.gov

Lake County is part of the Orlando-Kissimmee-Sanford, FL Metropolitan Statistical Area and its largest city is Clermont. It was created in 1887 from portions of Sumter and Orange counties and named for the many lakes contained within its borders. In the 1800s, the two main industries in the area were growing cotton and breeding cattle. In the latter part of the 19th century, people started to grow citrus trees. Throughout the 1940s and 50s, citrus production increased and grew into the area's leading industry. Today, Lake County is the 18th largest county in Florida, tripling in size in the past 15 years. It is centrally positioned with access to US Hwy 27, I-75, Florida Turnpike, and the new Florida 429 Beltway, an ideal location for industrial distribution, warehousing, and manufacturing. The Wellness Way area [7 miles south of Clermont], is also an area of significant economic growth



CLERMONT

LAKE COUNTY

Founded	1916
Population	36,693 [2018]
Area	11.5 sq mi
Website	www.clermontfl.gov
Major Employers	South Lake Hospital
	Vista Clinical and
	Diagnostics
	PUR Clinic
	South Lake Pain Institute
	University of Florida
	Cancer Center

Clermont was founded in 1884 and incorporated in 1916. Clermont is part of the Orlando-Kissimmee-Sanford Metropolitan Statistical Area, located just west of Orlando and north of Walt Disney World. As the largest city in Lake County, Clermont continues to expand along with Central Florida's growing population.

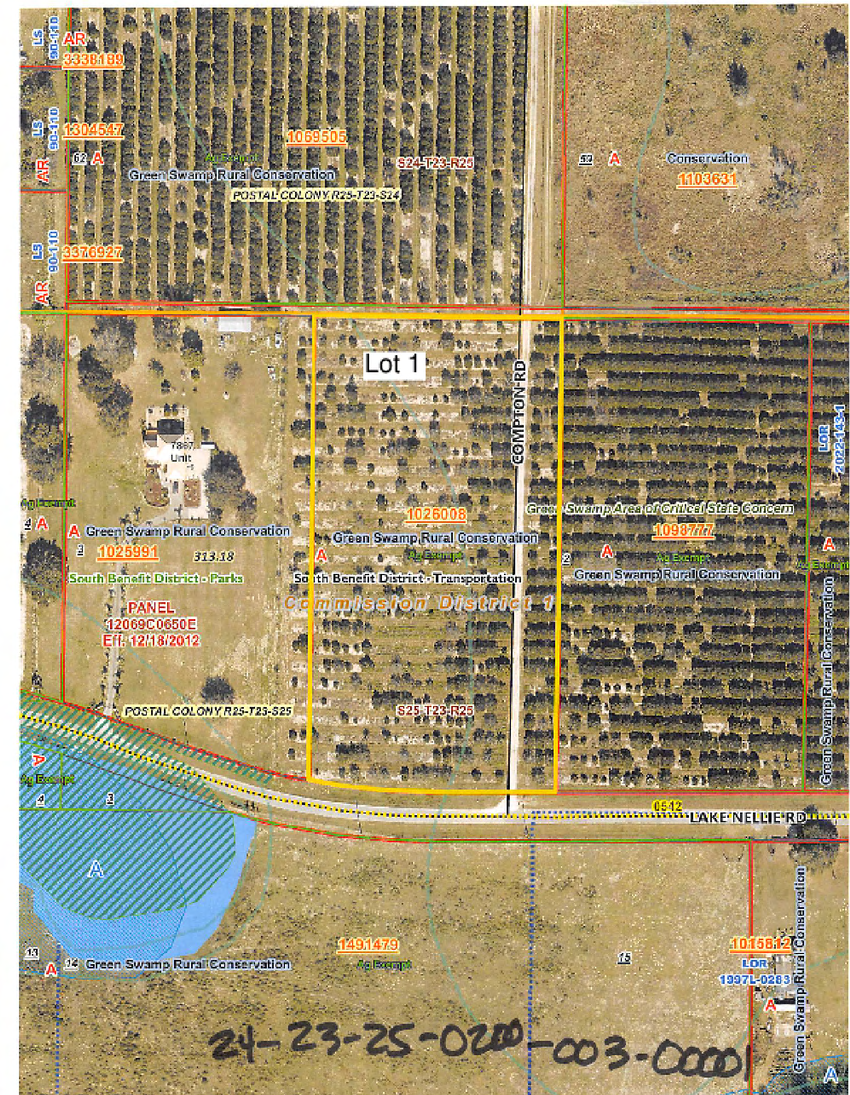
Clermont's rolling hills and lakes are a strong draw to homebuyers, and Clermont still has the "small town" feel they crave. Lifestyle and amenities are the number one reason homebuyers choose the area where they buy their home. Commercial real estate follows rooftops. Clermont, with a surging population of over 40,000, traffic counts nearing 60,000 daily trips, and an average annual household income of more than \$68,000.

Branded as "The Choice of Champions," Clermont is becoming a mecca for health and fitness. It is a home or training location for 20 recent Olympians. The city boasts a thriving healthcare industry with world-class orthopedics, cancer treatment, and robotic urologic services.

Lot 1

OF LOTS 5 | TOTAL LOT SIZE 4.76 - 4.91 ACRES | TOTAL LOT PRICE \$250,000 - \$275,000 | BEST USE

STATUS	LOT #	APN	SUB-TYPE	SIZE	PRICE
Available	1	1026008	Residential	4.82 Acres	\$250,000
Available	2	1098777	Residential	4.81 Acres	\$250,000
Available	3	1082625	Residential	4.78 Acres	\$275,000
Available	4	1110858	Residential	4.76 Acres	\$250,000
Available	5	1025974	Residential	4.91 Acres	\$250,000



Lot 2

OF LOTS 5 | TOTAL LOT SIZE 4.76 - 4.91 ACRES | TOTAL LOT PRICE \$250,000 - \$275,000 | BEST USE

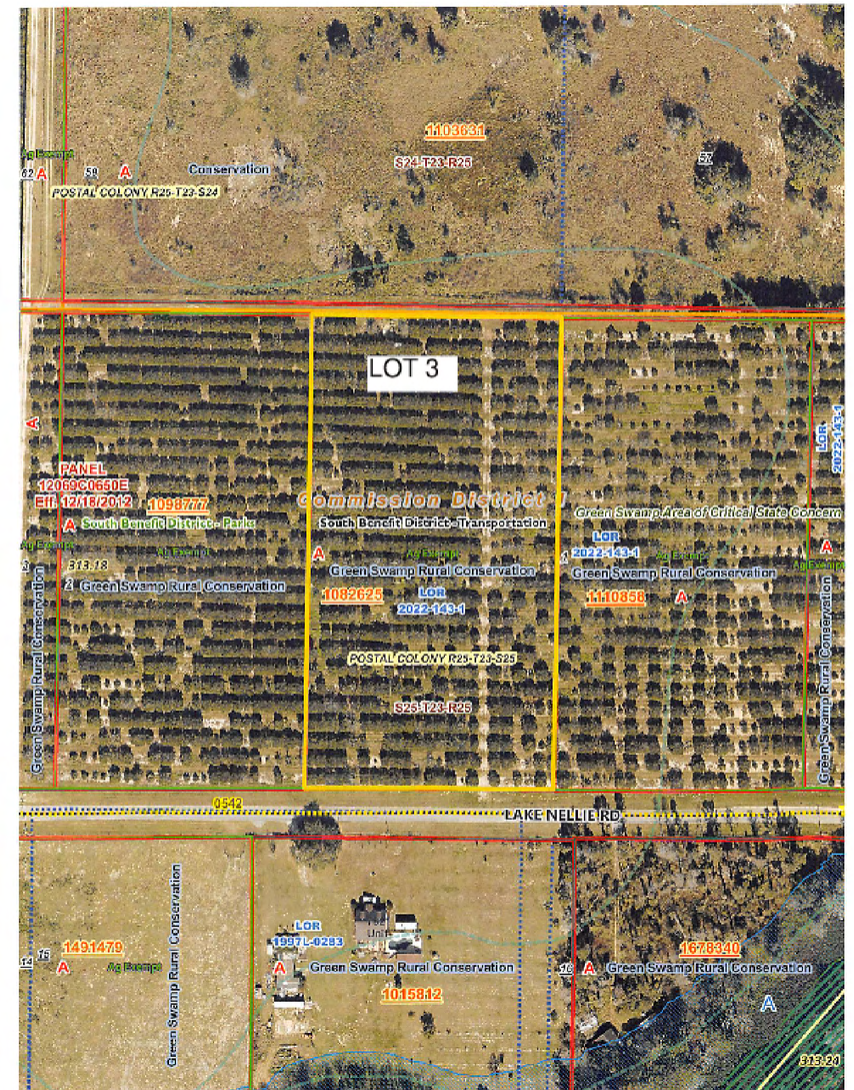
STATUS	LOT #	APN	SUB-TYPE	SIZE	PRICE
Available	1	1026008	Residential	4.82 Acres	\$250,000
Available	2	1098777	Residential	4.81 Acres	\$250,000
Available	3	1082625	Residential	4.78 Acres	\$275,000
Available	4	1110858	Residential	4.76 Acres	\$250,000
Available	5	1025974	Residential	4.91 Acres	\$250,000



Lot 3

OF LOTS 5 | TOTAL LOT SIZE 4.76 - 4.91 ACRES | TOTAL LOT PRICE \$250,000 - \$275,000 | BEST USE

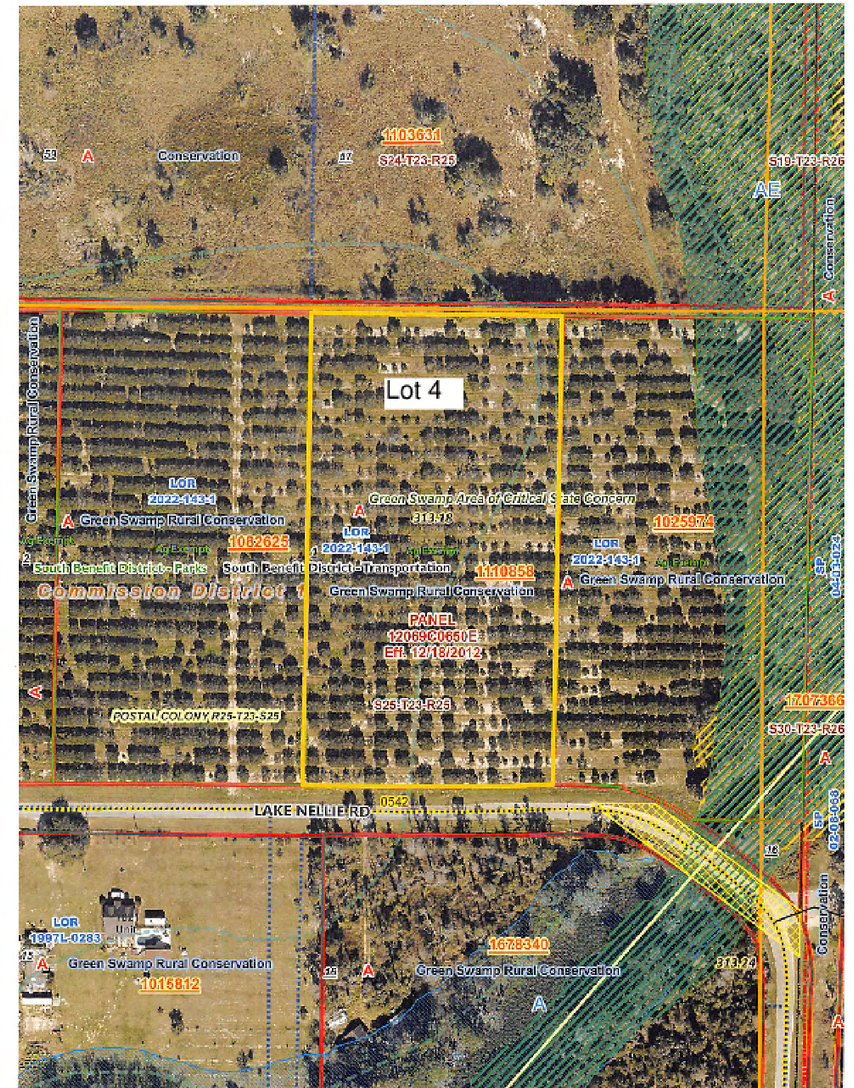
STATUS	LOT #	APN	SUB-TYPE	SIZE	PRICE
Available	1	1026008	Residential	4.82 Acres	\$250,000
Available	2	1098777	Residential	4.81 Acres	\$250,000
Available	3	1082625	Residential	4.78 Acres	\$275,000
Available	4	1110858	Residential	4.76 Acres	\$250,000
Available	5	1025974	Residential	4.91 Acres	\$250,000



Lot 4

OF LOTS 5 | TOTAL LOT SIZE 4.76 - 4.91 ACRES | TOTAL LOT PRICE \$250,000 - \$275,000 | BEST USE

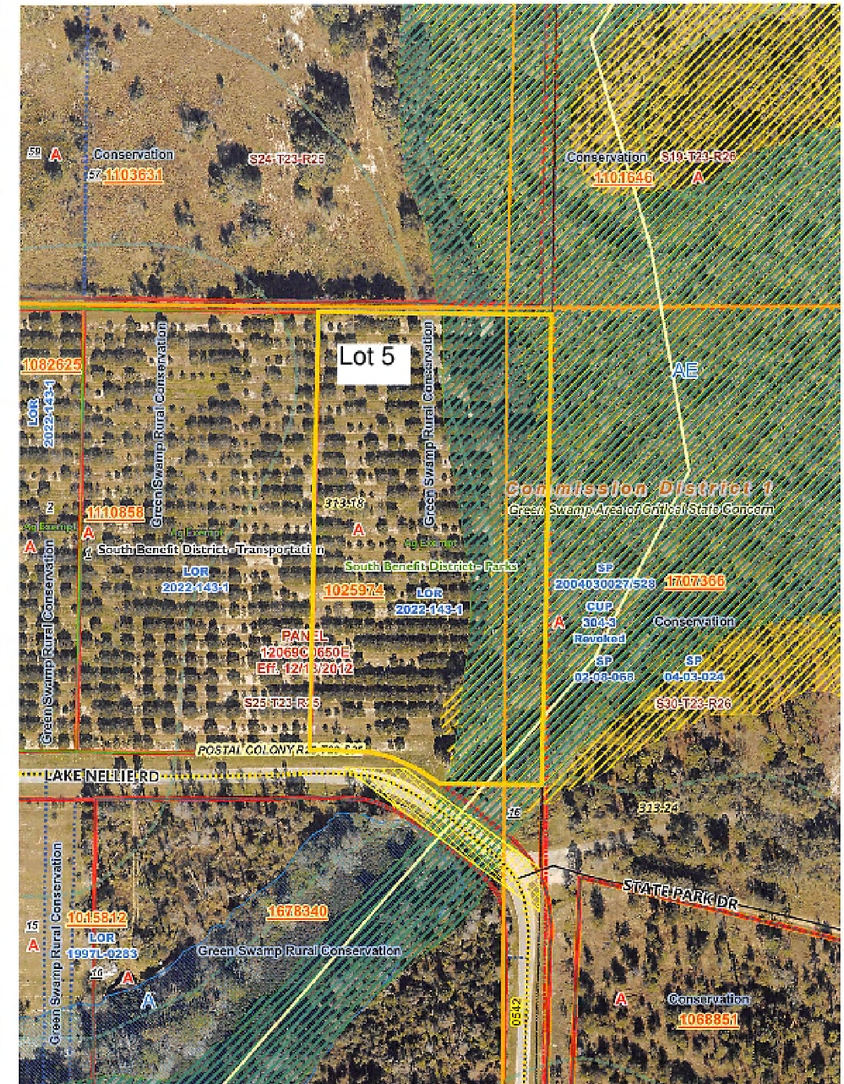
STATUS	LOT #	APN	SUB-TYPE	SIZE	PRICE
Available	1	1026008	Residential	4.82 Acres	\$250,000
Available	2	1098777	Residential	4.81 Acres	\$250,000
Available	3	1082625	Residential	4.78 Acres	\$275,000
Available	4	1110858	Residential	4.76 Acres	\$250,000
Available	5	1025974	Residential	4.91 Acres	\$250,000



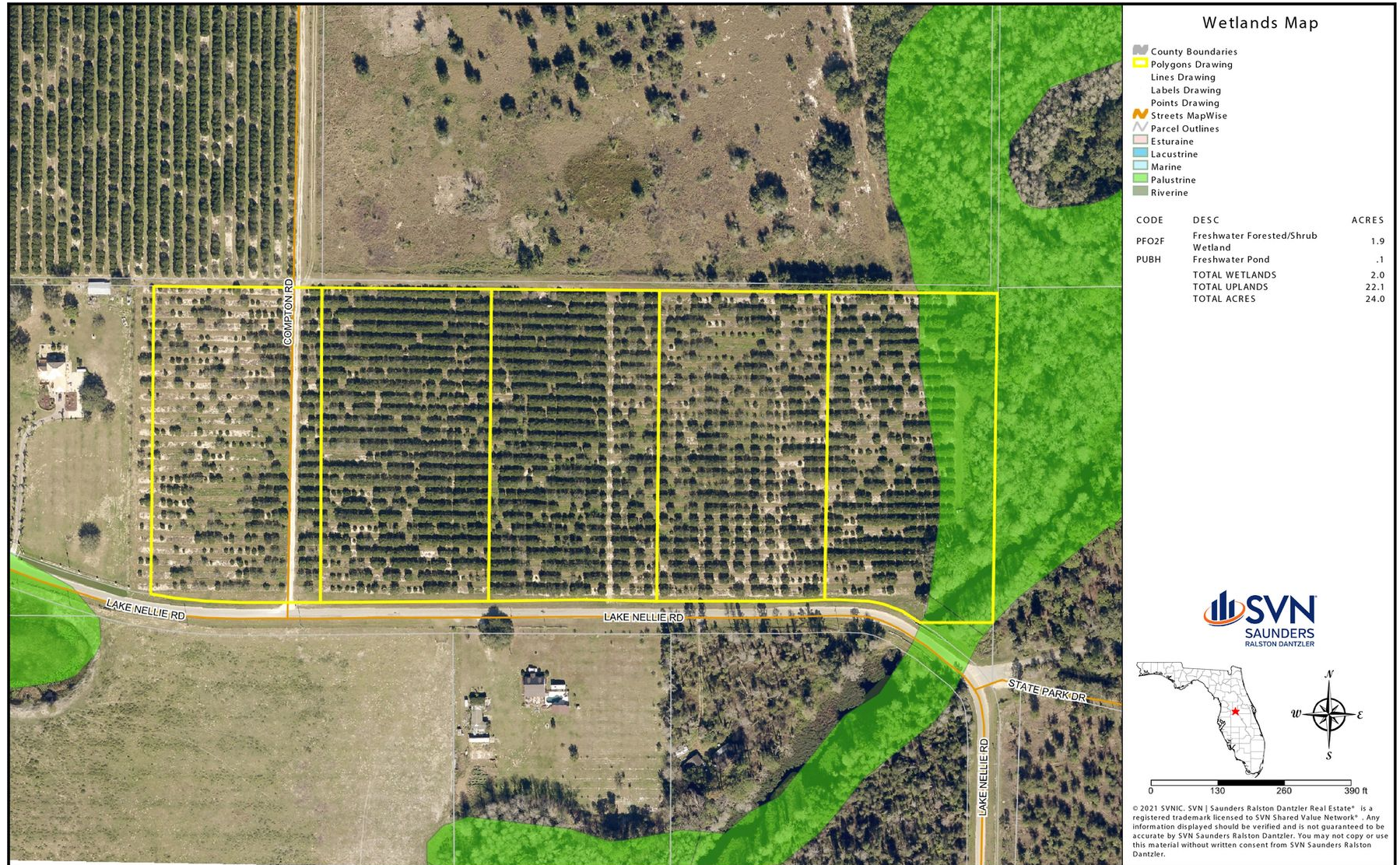
Lot 5

OF LOTS 5 | TOTAL LOT SIZE 4.76 - 4.91 ACRES | TOTAL LOT PRICE \$250,000 - \$275,000 | BEST USE

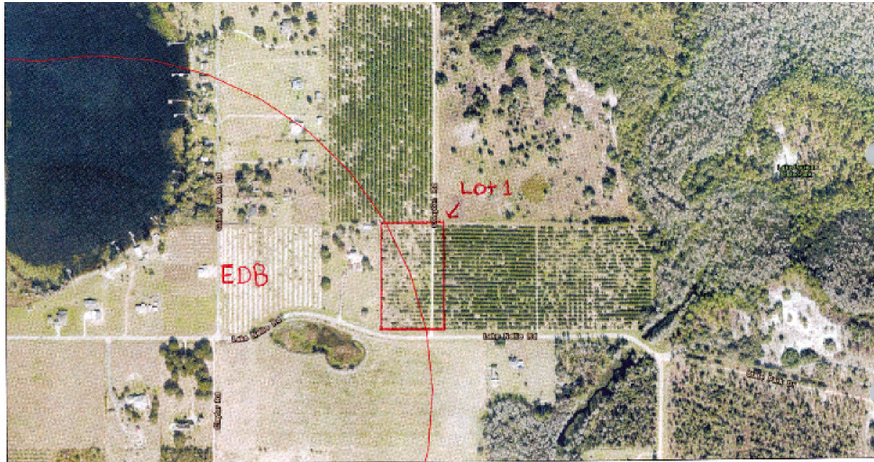
STATUS	LOT #	APN	SUB-TYPE	SIZE	PRICE
Available	1	1026008	Residential	4.82 Acres	\$250,000
Available	2	1098777	Residential	4.81 Acres	\$250,000
Available	3	1082625	Residential	4.78 Acres	\$275,000
Available	4	1110858	Residential	4.76 Acres	\$250,000
Available	5	1025974	Residential	4.91 Acres	\$250,000



Wetlands Map

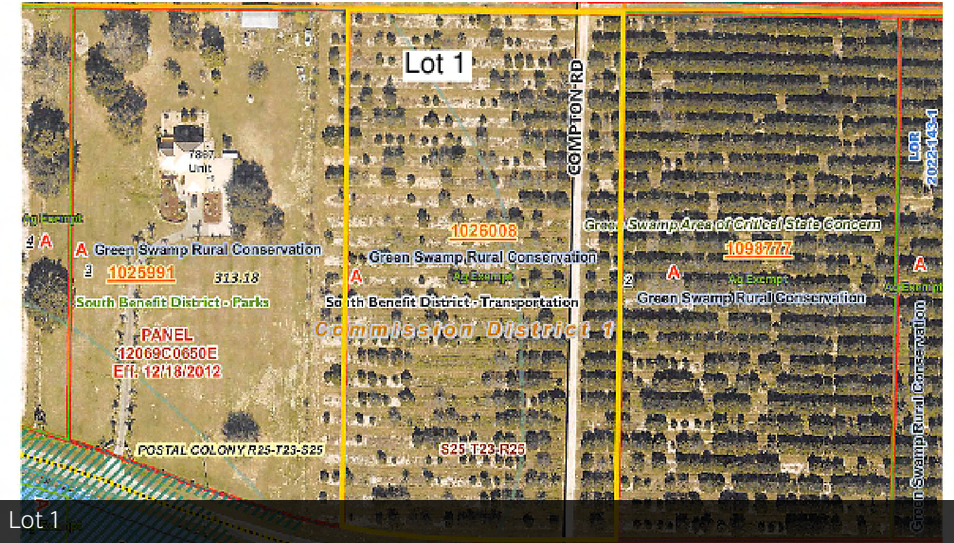


Lot 1 - EDB Information



March 20, 2023
Ground Water Contamination Areas

EDB Delineation



Lot 1



State of Florida Delineation Map (Red Circle)

Additional Photos



Advisor Biography



TRISH LEISNER, CCIM

Senior Advisor

trish.leisner@svn.com

Direct: 352.267.6216 | Cell: 352.267.6216

FL #BK3185853

PROFESSIONAL BACKGROUND

Trish Leisner, CCIM is a Senior Advisor at SVN | Saunders Ralston Dantzler Real Estate in Orlando, Florida.

Trish is a seasoned real estate professional with more than 30 years of experience in the industry. In 2021, she joined our brokerage to expand her commercial services offerings through our marketing strategies, advisor team, and the SVN® international network. Trish is the founder and broker of RealTeam Realty, Inc. Opened in 2011, the firm is in downtown Clermont, just west of Orlando in Central Florida. Her brokerage team provides services in commercial, land, farms, residential.

Trish works across four fast-growing central Florida counties: Lake, Orange, Sumter, and Polk. She is a valuable source of expertise for properties in this part of the state. She is originally from Maryland's Chesapeake Bay, moving to Florida 20 years ago. Her varied professional and business background includes:

- Small Area Planner - Anne Arundel County, MD 1998
- Owned two retail stores for 15 years.
- Owned, developed, and managed commercial properties in Maryland and Florida
- Worked in multiple Nuclear Power Stations in Quality Control (1980-1985)
- Farmer and rancher

Like many in our brokerage, Trish loves to be outdoors. She grew up water skiing, snow skiing, and owning horses - jumpers and dressage. She competed in endurance horse racing for several years. For 25 years, Trish was an avid offshore fisherman, traveling up and down the Coast from MD to the Bahamas, fishing in many Big Game Tournaments.

Today, Trish enjoys time with her husband at their retreat in Wyoming. She still has many horses and a working farm.

Trish specializes in:

- Commercial CCIM and Residential Broker
- Land
- Farms
- Commercial
- Market Analysis
- Valuations On Commercial Real Estate
- Court-Ordered Sales
- Estate Properties
- Bankruptcies, Trusts, And Probate



ONE OF AMERICA'S BEST BROKERAGES



**One of America's
Best Brokerages**



**APEX 2020 Top
National Producer**



**Most Influential
Business Leaders**



**Largest Commercial
Real Estate Brokers
in Tampa Bay**



**Ranked 210 on Inc.
5000 Regional List**



For more information visit www.SVNsaunders

HEADQUARTERS

1723 Bartow Rd
Lakeland, FL 33801
863.648.1528

ORLANDO

605 E Robinson Street, Suite 410
Orlando, Florida 32801
386.438.5896

NORTH FLORIDA

356 NW Lake City Avenue
Lake City, Florida 32055
386.438.5896

GEORGIA

125 N Broad Street, Suite 210
Thomasville, Georgia 31792
229.299.8600

©2023 SVN | Saunders Ralston Dantzler Real Estate. All SVN® Offices Independently Owned and Operated SVN | Saunders Ralston Dantzler Real Estate is a full-service land and commercial real estate brokerage with over \$3 billion in transactions representing buyers, sellers, investors, institutions, and landowners since 1996. We are recognized nationally as an authority on all types of land, including agriculture, ranch, recreation, residential development, and international properties. Our commercial real estate services include marketing, property management, leasing and tenant representation, valuation, business brokerage, and advisory and counseling services for office, retail, industrial, and multi-family properties. Our firm also features an auction company, forestry division, international partnerships, hunting lease management, and extensive expertise in conservation easements. Located at the center of Florida's I-4 corridor, we provide proven leadership and collaborative expertise backed by the strength of the SVN® global platform. To learn more, visit SVNsaunders.com.

